

TEAM 17

SHOWSTOPPER



MAY 13, 2022

SHOWSTOPPER

TABLE OF CONTENTS

- | | | | |
|----------|--|-----------|--|
| 1 | TABLE OF CONTENTS | 7 | MAKING A KILLER ENTRANCE
<i>Receptionist Desk 7</i>
<i>Reference Photos 8</i> |
| 2 | SHOWSTOPPER – MAIN PAGE
<i>High Concept 2</i>
<i>Synopsis 2</i> | 9 | THE FINAL EDIT
<i>Editing Room 9</i>
<i>Reference Photos 10</i> |
| 3 | STRUT THE RED CARPET
<i>Pre-Show / Attraction Queue 3</i> | 11 | FUN IN THE PROP ROOM
<i>Carpentry Room 11</i>
<i>Reference Photos 12</i> |
| 4 | THE LOOMING ARCHES OF THE STARLIGHT STUDIOS
<i>Facade 4</i> | 13 | CREATING THE ULTIMATE SHOWSTOPPER
<i>Wardrobe Department 13</i> |
| 5 | THE MYSTERIOUS BOUDOIR
<i>Dressing Room 5</i> | 14 | ONE LAST PICTURE!
<i>Main Theater Lobby 14</i> |
| 6 | ENTER THE NIGHTMARE
<i>Studio Lobby 6</i> | 15 | IT'S A WRAP
<i>Main Theater 15</i>
<i>Reference Photos 16</i> |

SHOWSTOPPER



High Concept

Guests are cordially invited to the 1948 Hollywood premiere of the most technologically-advanced picture of the year at Starlight Studios, but when a mysterious figure traps guests in, audience members must fend for themselves as they face a series of dark, ruthless, and diabolical slaughters.

Synopsis

Legendary actress, Patsy Walters was one of Hollywood's most sought after actresses during the 1940s, stunning audiences with her improvised performances accompanied by her beauty and grace.

After three grueling years of struggling to land a high-grossing role, Ms. Walters never received the level of fame she felt she deserved. Her legendary career spiraled rapidly downward when she profusely refused to surrender a major picture role to a younger, rising actress.

After her infamous, fiery outburst and downfall with Starlight studio executives, her finances and mental state swiftly deteriorated. Over the years that followed, Ms. Walters persistently and fiercely fought to be in the spotlight once again. Three years have passed since Ms. Walters' last movie in 1945 with no reports or sightings of the once acclaimed star.

Studio visitors have claimed to witness a ghastly figure wandering through the halls of Starlight Studios after nightfall, driving suspicion of the whereabouts of Ms. Walters.

Today, it's your turn in the spotlight - Step onto the red carpet premiere of this year's most thrilling and anticipated picture. And to those who are skeptical of Ms. Walters' presence - you may never forget what you may find here at Starlight Studios.

BEAT 1 | PRE-SHOW / ATTRACTION QUEUE

Strut the Red Carpet

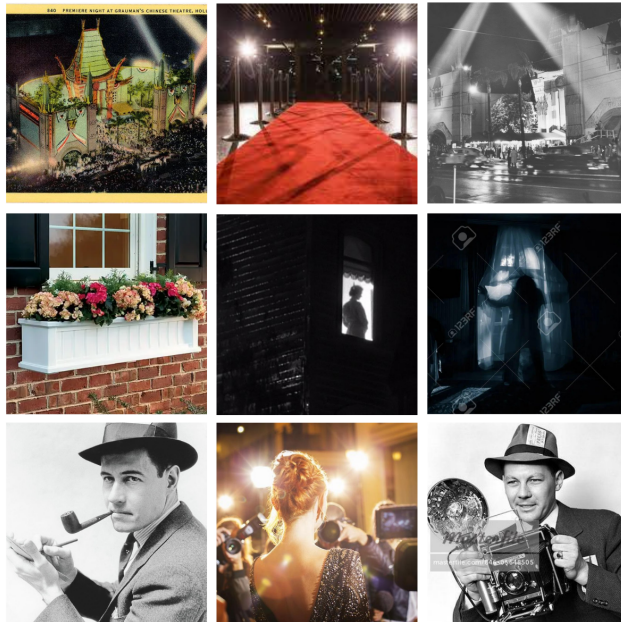
Approach the colossal arches of Starlight Studios to witness a glamorous red carpet premiere. There studio guests eagerly await to see the newest and most technologically-advanced motion picture to date. With never-before seen effects, *Smokeyjumpers to the Rescue* stars Hollywood's beloved Dean Wesley and rising movie starlet, Carol Clarke.

To the left of the guest line, a strange spectacle attracts the attention of some nearby attendees. Dried flowers dangle across a planter sitting at the bottom of the window sill revealing a silhouette in the window of an odd, erratic thin female seen pacing back and forth with abrupt, sporadic movements.

Right beside the window, stands two shameless comical reporters working the red carpet of the big premiere. Both are renowned for not only for their dramatic public quarrels, but also infamously known to do ANYTHING to obtain the latest, juicy celebrity gossip; including being society's most persistent pests. One is a journalist who hunts news for the *Los Angeles Post*, the other is a photographer and journalist for the top-grossing paper of the 40s, *The Hollywood Herald*.

Look out as they can be awfully convincing. They might even try to bribe guests in an attempt to extract juicy rumors about the picture, the studio and its most prestigious stars, including this oddly particular room.

REFERENCE PHOTOS STRUT THE RED CARPET



BEAT 2 | FACADE

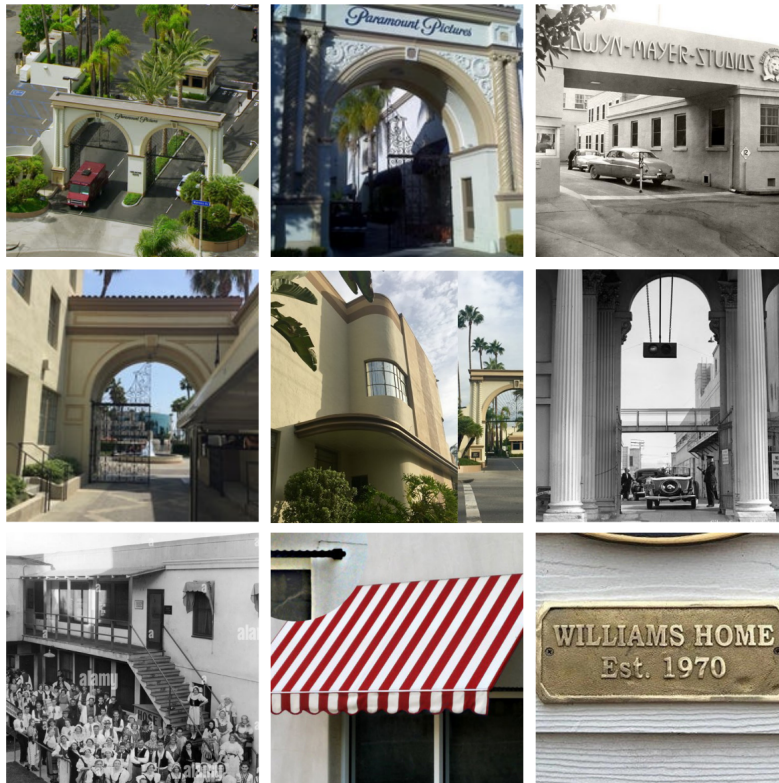
The Looming Arches of the Starlight Studios

As attendees of the premiere walk underneath the infamous arches of the Starlight Studios, guests make a bizarre discovery.

Positioned at the left of a lit walkway, guests come across a sunbleached, unkempt, red and white striped cloth door awning draped over an unidentified dressing room. A weathered and engraved gold plaque is discovered at the right of the door frame, but the plaque is barely legible. In big cursive font, the letters, "P TY " are meagerly legible.

REFERENCE PHOTOS

THE LOOMING ARCHES OF THE STARLIGHT STUDIOS



BEAT 3 | DRESSING ROOM

The Mysterious Boudoir

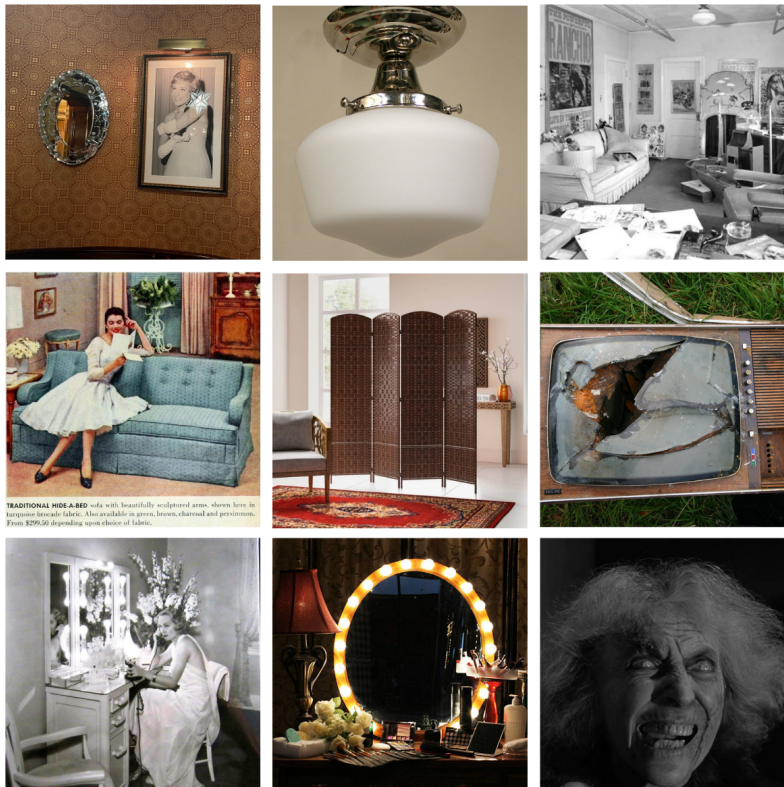
Step quietly into an old neglected dressing room, discovering cobweb-infestations and dust blanketing antique furniture of the early 40s. Unsettling, crackles of electricity exude out of a beaten down television centered in the somber room.

Sitting in the corner of the room, a senile, motionless figure is crouched over in a twisting position, sobbing into the palms of her hands. Her gray gown drapes down on a battered white cushion lounge chair.

The scrawny character then glares intensely at her own reflection in a warmly lit vanity mirror, slowly combing through her disheveled hair.

Without warning, the figure moves, striking the mirror with her fist, accompanied by an enraged, horrendous shriek. The elderly, disheveled presence instantaneously whips around, coming face to face in the presence of the uninvited guests.

REFERENCE PHOTOS THE MYSTERIOUS BOUDOIR



Enter the Nightmare

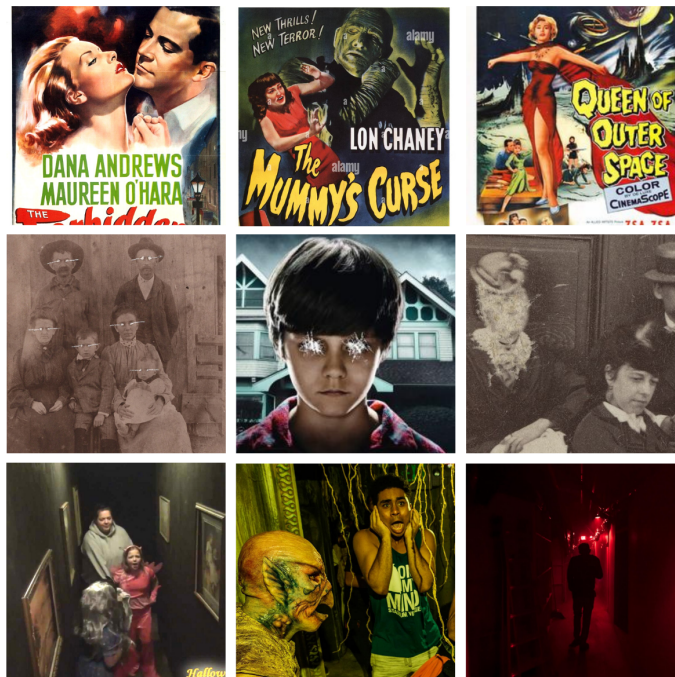
Quickly scramble away from the horrific discovery, entering slowly into a hallway of glitz and glamour. As you look closely, you may find that Hollywood life is not as perfect as it always seems.

Take a look at some of Starlight Studios' most successful pictures in posters lining the contemporary, white studio lobby walls including: *Romance in Paris*, *The Legend of the Haunted Hallows*, and *Outerspace Invasion*!

Please disregard the casualties of some of the posters as you take a closer peek. Clear evidence of wickedness and jealousy are reflected in the vandalized artwork, with multiple deep scratches over actors; eyes and notable young starlets' bodies.

At the end of the hallway, a black framed movie poster seems to be untampered with. The artwork on this particular portrait of a shocked woman seems to be the only one strangely untouched. Suddenly the frame crashes down, revealing a mischievous, trickster, Ms. Patsy, giggling sinisterly as she disappears into the depths of the studio.

REFERENCE PHOTOS ENTER THE NIGHTMARE



BEAT 5 | RECEPTIONIST DESK

Making A Killer Entrance

In Hollywood, it's all about making an entrance. Check-in with the receptionist, sign your name, and welcome into the renowned Starlight Studios.

As you approach the receptionist's desk something looks....*unnatural*.

A suspicious puddle of red goop is found at the entrance of the receptionist's lobby with bloody footprints trailing off back to a dark figure standing behind a white curtain to the side of the receptionist desk.

The sound of an unanswered, ringing dial tone loudly blares louder as you approach the desk, only to find an ungodly sight.

Brutally stabbed three times, the receptionist is found with pairs of large office scissors lodged into their hunched over body with blood trickling down below their corpse, staining the white tile floor.

As you glance around the stark walls, you feel a presence watching your every movement. Do not fret, but pay close attention to your surroundings, ESPECIALLY when the ceiling light flickers.

Within a blink of an eye, Patsy is seen smirking, holding a bloody pair of scissors with a wild, malevolent look in her eyes as she stands to the left of the desk. A victim lying on the floor suddenly moves, crawling on the floor for help, warning us of the horrific acts that have been committed as Patsy draws closer to finish off the surviving victim. That's our cue to make a run for it!

REFERENCE PHOTOS
MAKING A KILLER ENTRANCE



The Final Edit

In hopes of finding somewhere to hide and escape, we enter a room with a luminescent retro neon sign above the doorway that says "Editing."

Intensive whirls and hums of a motion picture projector echo through the hallways leading into the workplace of the studio editors, where an employee is working overtime on the studio's most recent Western, *The Rowdy Cowboy!*

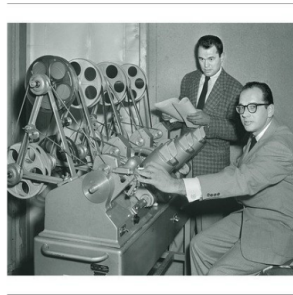
Enter into the editing room; a tight dimly lit room lined with storyboards across the dark walls, which includes hanging film stripes in development, an editor's workstation, and a towering monumental standing rack packed tightly with large film reels.

A gnarly sight of an editor in his business attire is found gasping for air, as the devious Patsy cranks the handle of a film projector in one hand, glowering her piercing, green eyes into her next victim's soul. Fueled with vengeance, she wraps and tightens the editor's neck into a strangulation by his own work!

She bellows in a sarcastic tone to the editor, "Sorry, you didn't make the FINAL cut!" She cranks the handle of the projector in one hand forcing down the editor's head closer and closer to the machine, as she forcefully feeds the film strip into the projector with the editor yelping for help in this ruffian bloody scene.

Patsy maniacally laughs at this gruesome scene, along with the whirling sounds of the film projector malfunctioning and the bright flashes of light illuminating her horrific act.

REFERENCE PHOTOS
THE FINAL EDIT



Fun in the Prop Room

Carefully detailed movie props such as a glistening Egyptian gold pharaoh, a stuffed scarecrow, a wooden treasure chest, and a dismantled Hollywood sign occupy the prop room. Hanging industrial factory lights hover from the high ceiling above, with scents and remnants of wood and sawdust filling the atmosphere and pathway.

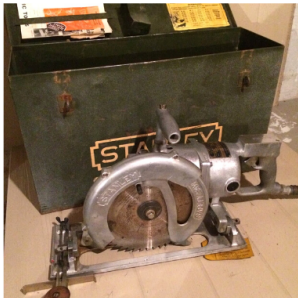
Positioned underneath the light lies an imprisoned studio employee on a prop table next to a large assortment of hardware tools, struggling to be released; whimpering, and begging nearby guests to help him escape out of his chain locks.

From the shadows appears Patsy, cloaked in a blood drenched dress as she proceeds towards the table where a heavy chop saw is placed. Making a grisly theatrical entrance, she performs a short dramatic monologue about an upcoming and unforgettable performance where she will finally take her well-deserved limelight.

Once she finishes her speech, she unforgivingly and violently slashes down into the prop artisan's throat, beheading the subject, and splashing nearby onlookers with the victim's bloodshed.

She chuckles as she prances back into a secret hallway, yelling "always be careful!" as she looks up at a safety sign placed next to the work bench.

REFERENCE PHOTOS
FUN IN THE PROP ROOM



Creating the Ultimate Showstopper

Enter into a maze of costume selections of florals and pastels, knee-high A-line skirts, circle dresses, ravishing hand sewn gowns, and refined collared blouses tailored by exquisite European designers of the early 1940s.

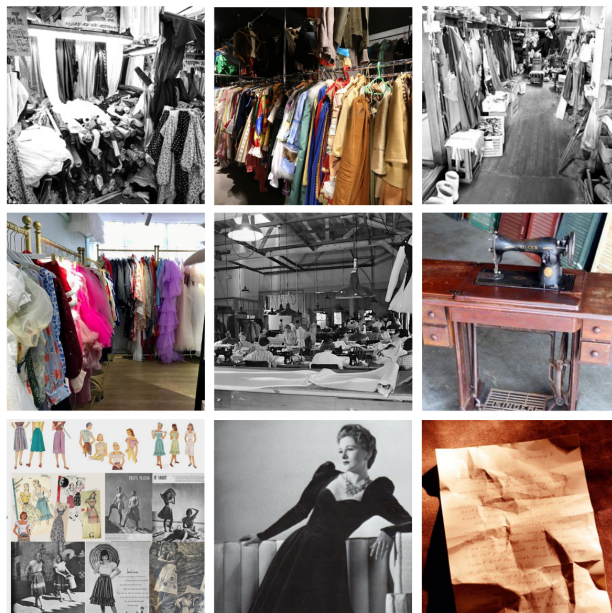
Navigating through the labyrinth of clothes, we hear mysterious giggling sounding throughout parts of the room, along with thundering sounds of a working sewing machine.

Patsy pops up behind a rack of clothes leading us in to take an exclusive preview of her newest design creation. She explains that this look is her absolute favorite; one that she has been working on for many years. She calls it, "The Ultimate Showstopper" and explains it will at last complete her next, upcoming performance, all while displaying a hellish smirk.

She then leads us to a nearby sewing table, where we find the studio costume department's lavish designs pinned across a corkboard placed right above Patsy's temporary workstation.

Across the sewing table lies her unfinished black gown, along with open, crumpled design drafts scattered across the table, revealing the detailed planning of this intricate gown design Patsy has methodically and carefully hand-drawn.

REFERENCE PHOTOS CREATING THE ULTIMATE SHOWSTOPPER



BEAT 9 | MAIN THEATER LOBBY

One Last Picture!

Immediately departing the wardrobe department, leaving Patsy to make the finishing touches on her dress, guests are instantaneously greeted by a hoard of flashing lights! Paparazzi can be heard capturing shots of all guests walking down the main theater lobby.

Don't forget to strike one last pose as you walk the final carpet into the main theater to view the film premiere of the evening.

As we approach closer to the hallway, we find a vandalized 6 foot movie premiere poster with dark red, blood writing, spelling out "STARRING Patsy Walters"

At the end of the hall, we see the director frantically emerge around the corner of the hallway, screaming at the top of his lungs, "Quickly, quickly, she is completely destroying my entire masterpiece!!" as he races back into the following room.

REFERENCE PHOTOS ONE LAST PICTURE!



BEAT 10 | MAIN THEATER

It's a Wrap

We enter the main theater, only to find a monstrous sight!

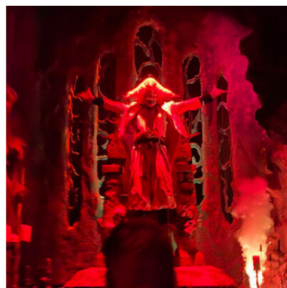
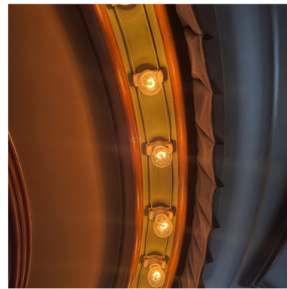
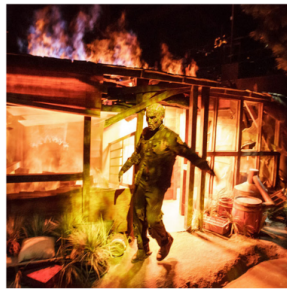
Guests are led down the center aisle towards the stage approaching a large 30 foot, ruptured theater screen engulfed in massive red and orange flames to the sides of the stage. Gray smoke creeps down center stage filling the theater's walkway.

To the right and left side of our view, we see injured, lifeless victims suffering grueling burns lying lifelessly in plush velvet ruby red theater seats. Several living burning victims recognize nearby witnesses. Wounded casualties reach out in anguish from the left and right of the seats, pleading for help, propelling frightened guests towards the main attraction down towards the stage.

A beaming spotlight captures the emergence of Patsy, as she manically flaunts down the stage in her new long, dark midnight gown with her arms opening, revealing the burning, chaotic finale scene in flames.

Patsy gives one last finale bow as she excitedly thanks nearby audiences for attending her lavish evening premiere spectacle for she has finally made her big comeback in Hollywood once again.

REFERENCE PHOTOS
IT'S A WRAP



TEAM 17
HAUNT COMP

SHOWSTOPPER



THANK YOU!